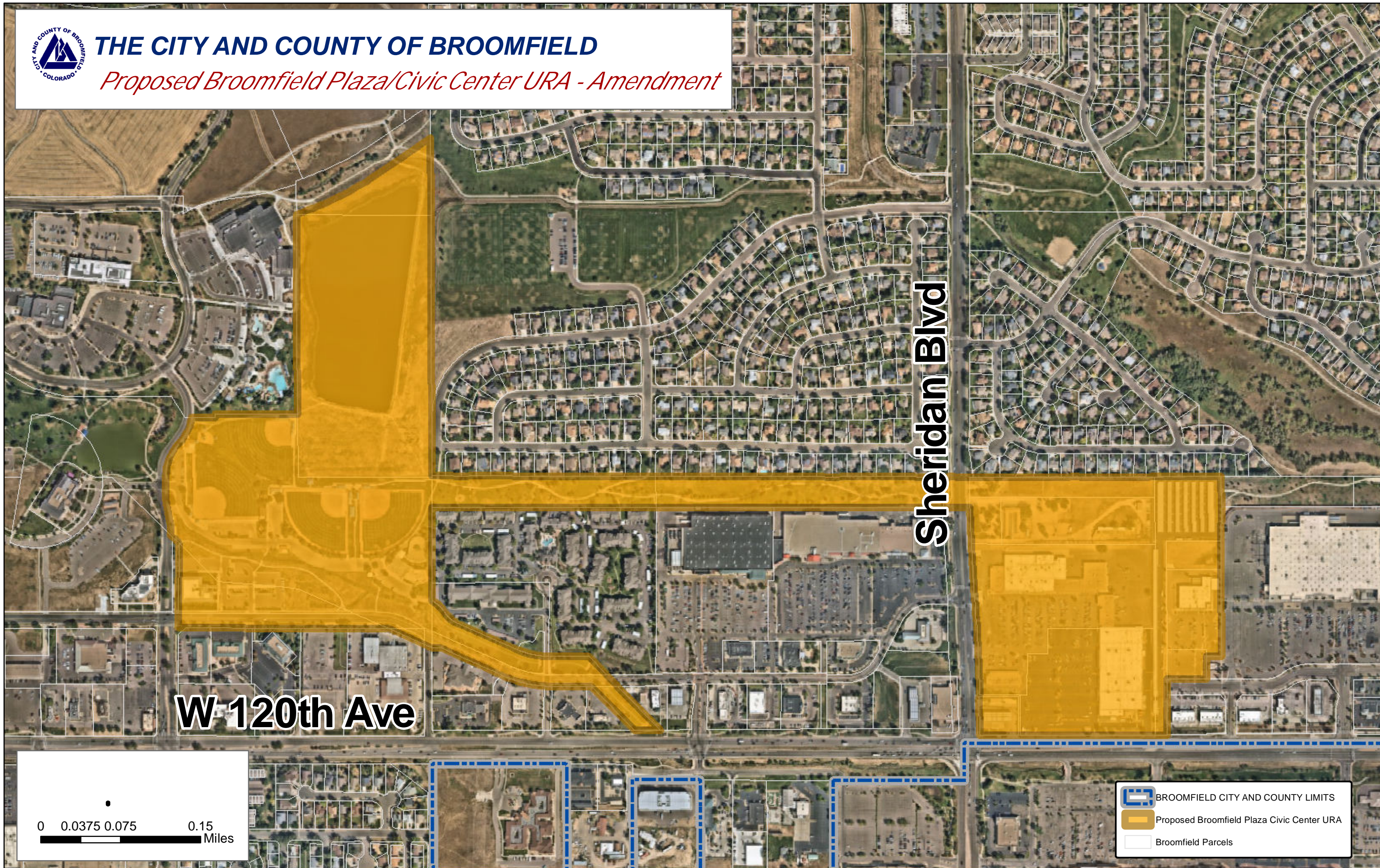







THE CITY AND COUNTY OF BROOMFIELD

Proposed Broomfield Plaza/Civic Center URA - Amendment



W-120th Ave

Sheridan Blvd

-  BROOMFIELD CITY AND COUNTY LIMITS
-  Proposed Broomfield Plaza Civic Center URA
-  Broomfield Parcels

0 0.0375 0.075 0.15 Miles